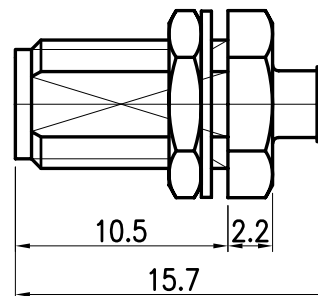
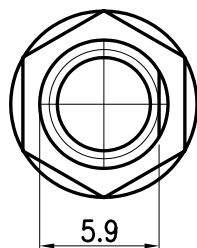


This document contains proprietary information and may not be reproduced or copied without the express written permission of a duly authorised representative of MPD.

REV	DESCRIPTION	DSG	APR	DATE



NOTE :

- Interface : IEC 169-15
MIL-STD-348A, SMA
- Material and finish
Center contact : Beryllium-copper / Gold
Insulator : PTFE
Body, bush : Brass / Ternary-alloy
- Environmental data
Operating Temperature : -45 ~ 120C°
2002/95/EC (RoHS) : Compliant

<small>UNLESS OTHERWISE SPECIFIED : ALL DIMS IN MILLIMETERS TOLERANCES ON DECIMALS 1 PLACE ±0.20 ANGLE ±1.0° 1.6a 2 PLACE ±0.10 REMOVE BURRS, BREAK SHARP EDGES</small>					
<small>DRAW</small> <i>JM_PARK</i> 2006.12.12	<small>DESIGN</small> <i>WY_CHO</i> 2006.12.12	<small>CHECK</small> <i>[Signature]</i> 2006.12.12	<small>APPRO.</small> <i>CU_PEE</i> 2006.12.12	<small>TITLE</small> SMA JACK STRAIGHT FOR 0.085" (SOLDER)	
<small>Material</small> SEE NOTE 2.	<small>SIZE</small> A4			<small>DWG NO.</small> A3005-310	<small>REV</small> A
<small>Finish</small> SEE NOTE 2.	<small>Scale : NS Do Not Scale Drawing 1 of 1</small>				